

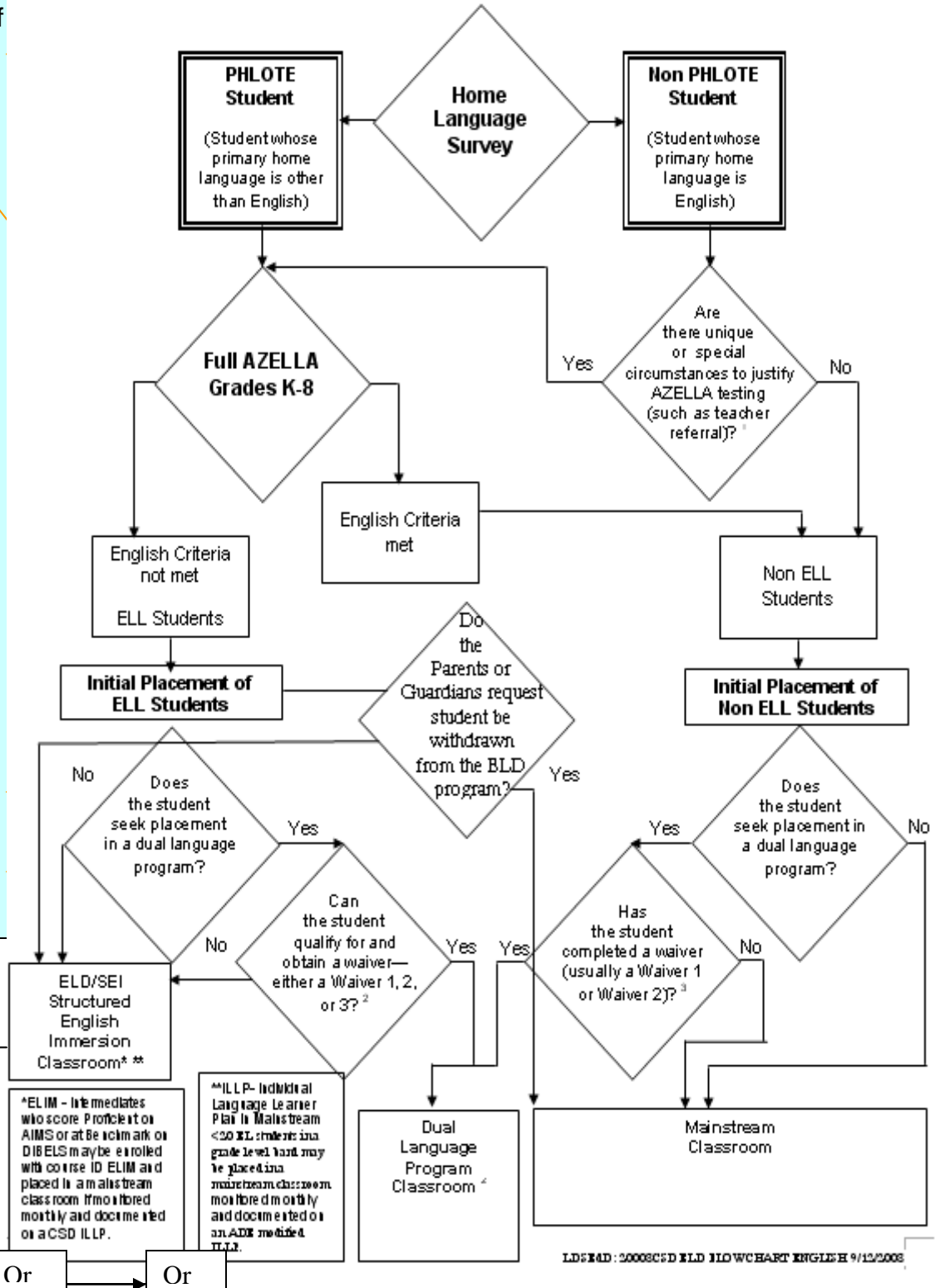


# Creighton School District

Procedure for identification, placement and parent notification for the placement of students into and out the CSD ELD program.

## CSD English Language Learner Identification, Placement Options and Monitoring Flow Chart

- Give CSD/ADE Home Language Survey
- Give Initial AZELLA Test of new students or download previous AZELLA score.
- Make Green ELD Folder in Cumulative File and file:
  - CSD Registration Form
  - AZELLA pre score Sheet and
  - AZELLA Official Score Report
  - Annual Parent Notification of:
    - Placement in ELD or
    - Reclassification or
    - Non Proficient after Reclassification
  - Parent Requests:
    - Parent Waiver Request for Bilingual Program (If applicable)
    - Parent Request to Withdraw from ELD program (If applicable)



- Document progress, Interventions and Parent Notification of
- ELD ILLP, ELD Progress Report, Reclassification 2 year Monitoring and APIR/WICP

Post Spring AZELLA Test  
All ELLs, ELLAR, FEP1 AND FEP2