



SCHOOL REPORT CARD 2008
Arizona Department of Education

Tom Horne Superintendent of Public Instruction
 Research and Evaluation Section
 (602) 542-5151 / reportcards@azed.gov

Principal	Jeff Geyer jgeyer@creightonschools.org
Entity ID	5288
CTDS	070414170
Grades Served	KG - 8
Students Enrolled	937
Type of School	Regular Facility - In An Elementary In High School District
Office Hours	7:30 AM to 4:00 PM
Number of Instruction days	Not Avail
School Year Start and End	Not Avail

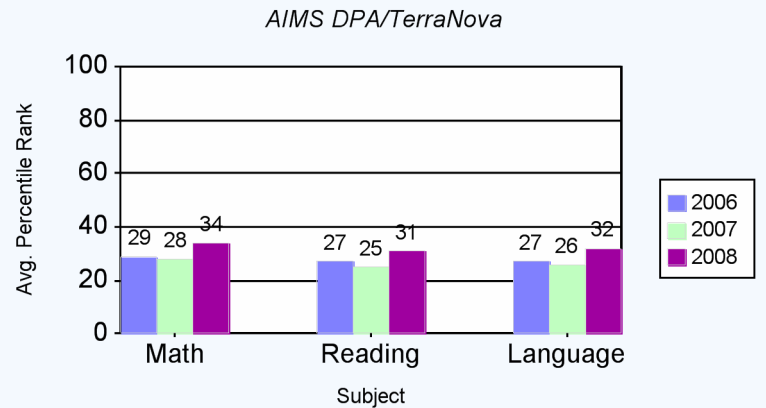
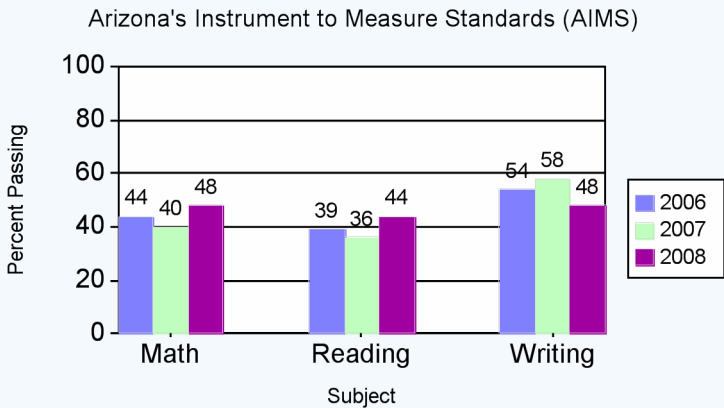
Papago School
 Creighton Elementary District
 2013 N. 36th Street
 Phoenix, AZ 85008
 (602) 381-6100 office
 (602) 381-6118 fax
<http://www.creightonschools.org/papago>

School Mission and Goals

As the Papago Community, we will provide our students an opportunity for academic success, sense of responsibility, character education, and self pride in a safe and orderly environment. Our goals are to improve teaching, learning, administration, and leadership using indicators such as increased student achievement results at a rate higher than the state average
 Reduced gaps in achievement among ethnic and SES groups at a rate that is greater than the state average

AZ LEARNS Profile For The School	Underperforming
The Federal School Improvement Status	Year2 School Improvement
The AYP Status For This School	Not Met

Test Results for Spring 2007



Measure of Academic Progress (MAP)

Subject	Number in Analysis	Avg Growth Index For School	Avg Growth Index for State
MATH	500	1	-3
READ	502	-5	-1

Arizona English Language Learners Assessment (AZELLA)

Number of English Language Learners	422
Percent Reclassified as Proficient	17%

School Performance Measures

Attendance Rate	96%
Promotion Rate	96%
Dropout Rate	6%
Four-Year Graduation Rate*	NA
Five-Year Graduation Rate*	NA

* - Graduation Rate does not apply to K-8 Schools
 NA - Not Applicable

On Campus Incidents 5

Papago School is committed to providing our students with a safe and orderly learning environment. The number of incidents this year is significantly down from last year. This is due to the combined efforts of our administration, teachers, law enforcement officer, students and our families. We are currently developing a Pyramid of Interventions process and detailed plan to identify strategies enabling teachers to intervene at the Tier I level in the classroom, Tier II through the Intervention

The Arizona Department of Education of the State of Arizona does not discriminate on the basis of race, religion, color, national origin, sex, disability or age in its programs, activities or in its hiring and employment practices. For questions or concerns regarding this statement, please contact Administrative Services at 602-542-3186.